

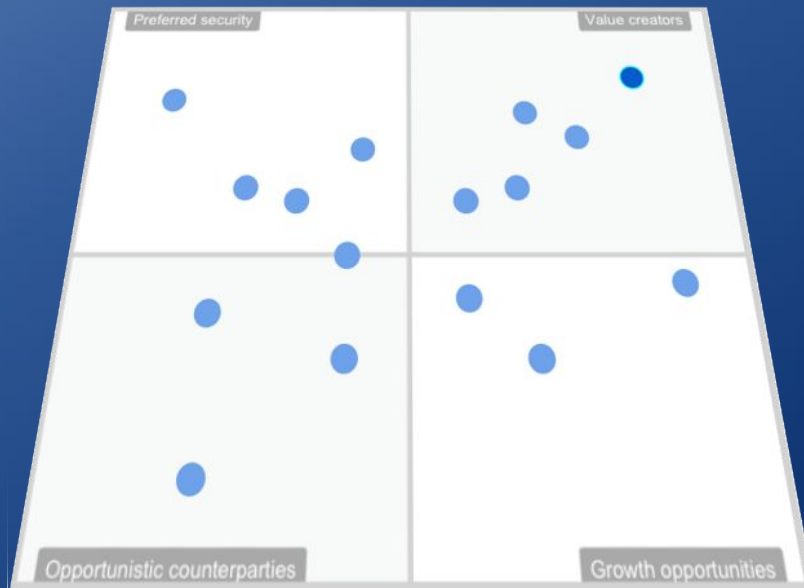


ICMR Matrix

Capital transparency at Lloyd's

Know where you stand

Reduce cost of capital, improve performance, achieve higher valuation

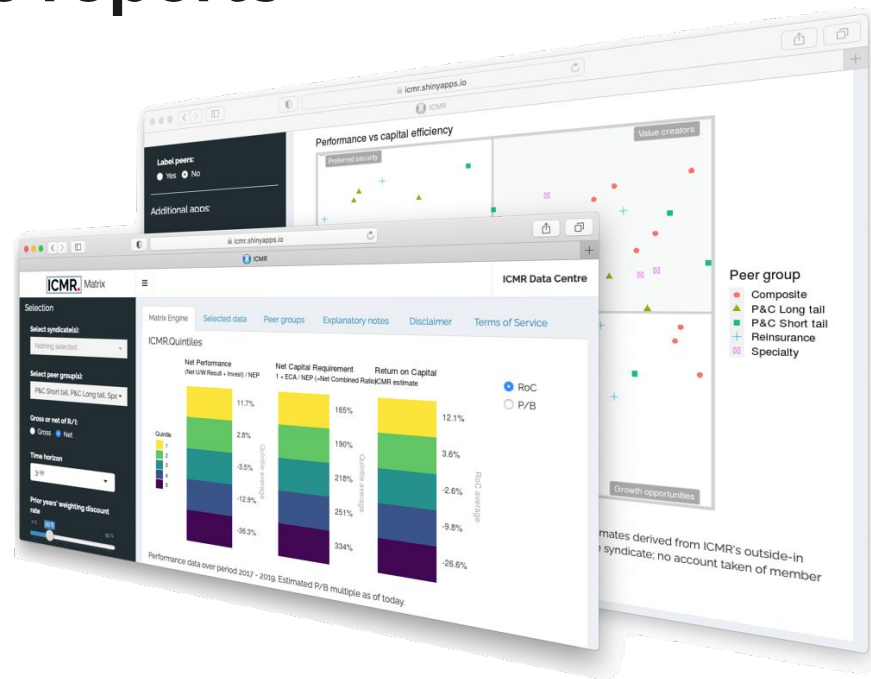


Scalable tools - Bespoke reports

ICMR.Matrix lets you understand Lloyd's competitive landscape in performance, capitalisation and valuation

ICMR.Matrix brings together a unique mix of comparative Lloyd's data; we can even adapt to your internal management information template

See whether your performance is getting the CPG recognition it deserves in your capital setting and how effective you are at achieving this compared to others

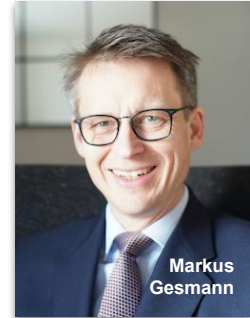


Insurance Capital Markets Research

ICMR was founded by ex-Lloyd's heads of research and analysis Quentin Moore and Markus Gesmann. They have a combined experience of 50 years in the Lloyd's market.

Markus and Quentin were instrumental in the establishment of the Performance Management framework at Lloyd's in the early 2000s. Their teams have developed and established many of the performance reports and data driven assessment tools used by the Corporation today.

Having also worked together in the capital markets, they saw a need for insights into capitalisation and how it relates to valuation at Lloyd's. With that purpose in mind they founded ICMR in early 2020.



Get access to ICMR.Matrix

A standard subscription to **ICMR.Matrix** gives you access to our suite of online tools.

In addition, we help you at every step through your access to ICMR principals at the cutting edge of Lloyd's quantitative analysis; an unmatched combination of data-driven design, research, modelling and reporting

Book a demo:

<https://calendly.com/icmr/imcr-matrix-demo>

